

CONTROLLED BLEEDING



PATIENT COMFORT



EASY REMOVAL

*Managing Bleeding after
AV Fistula Intervention...*

Is as Easy as 1, 2, 3

SLIP-NOT™
Suture Retention Device 

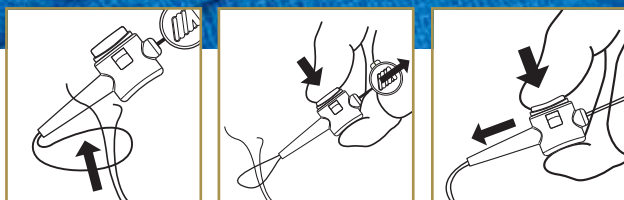




A unique and effective method to secure a purse-string suture following fistula intervention. Suture tension adjustments at the push of a button. Clear visibility of exit site. Enhanced patient comfort. Easy suture removal.



EASY, STEP-BY-STEP INSTRUCTIONS



1. Place purse-string suture around the sheath; feed free ends of the suture through the snare loop of the device.
2. Depress the white button; pull the green tab to thread the free ends of the suture through the device. Discard green pull tab.
3. Depress the white button and slide the SLIP-NOT forward to produce tension. Release the white button to secure the suture within the device.

ORDERING INFORMATION

Catalog Number	Contents	Packaged
SLIP-NOT SUTURE RETENTION DEVICE		
SRD100	one per sterile pouch	10 pouches per box
SRD200	two per sterile pouch	10 pouches per box

OTHER DIALYSIS SOLUTIONS



MERIT MAK™ & SMAK™ MINI ACCESS KITS

When little things mean a lot, get started with the Merit MAK.



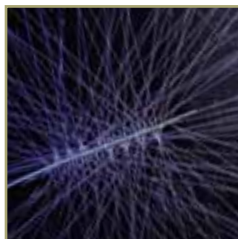
PRELUDE® SHORT SHEATH INTRODUCERS

Short sheath provides access to dialysis fistulas and grafts. Can be used for declot, angioplasty, and thrombolysis procedures, as well as temporary hemodialysis.



IMPRESS® PERIPHERAL ANGIOGRAPHIC CATHETERS

An impressive line of catheters from tip to hub. The proprietary braid pattern provides premier flexibility without compromising steerability. Now available in short, 30cm lengths.



FOUNTAIN® INFUSION SYSTEMS

Exclusive gradient hole sizes allow uniform distribution of therapeutic agent along the entire length of the infusion segment.



PROGUIDE™ CHRONIC DIALYSIS CATHETER

A step-tip dialysis catheter that's clearly a step up. Apposition bump deflection minimizes recirculation and optimizes flow rates.



SHORTSTOP® AND SHORTSTOP ADVANTAGE™ TEMPORARY SHARPS HOLDERS

A side access feature allows placement of a loaded syringe attached to a needle, thus preventing any tipping or needle bending.

